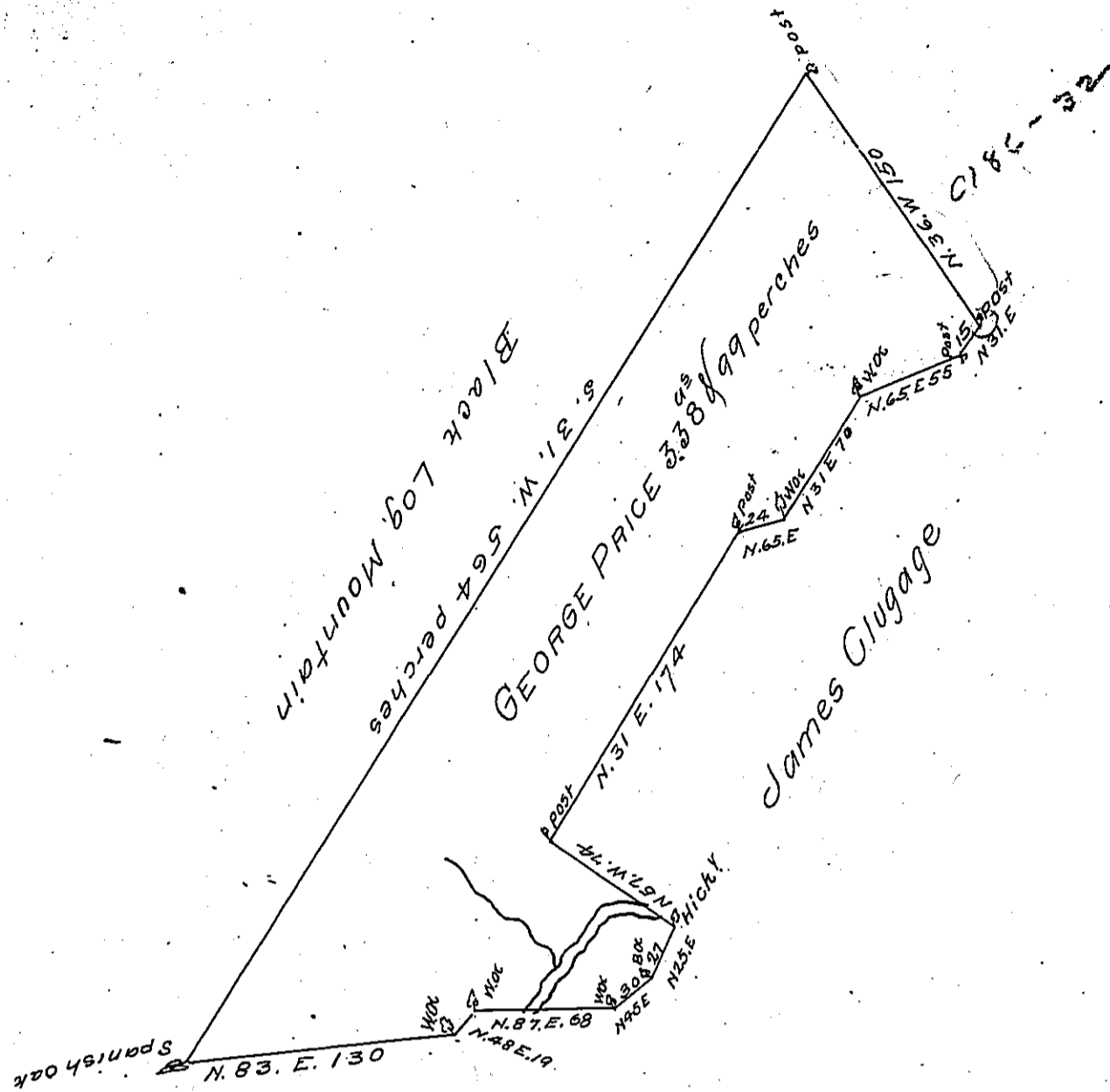


P-27-430
Plus Crowell Vol 186



Robert Clugage

Situate in Bedford County Sherley Township adjoining Robert
 & James Clugage on the South Side of Black Log Mountain
 Containing 338 acres & 99 perches & the usual allowance of
 Six per Cent for roads. Surveyed the 23^d day of November
 1786. In pursuance of a Warrant dated the 17th day of
 December 1785

George Woods D.S.

To John Lukens Esq. S.G.

IN TESTIMONY that the above is a copy of the original remaining on file in
 the Department of Internal Affairs of Pennsylvania, made
 conformably to an Act of Assembly approved the 16th day of
 February, 1833, I have hereunto set my Hand and caused
 the Seal of said Department to be affixed at Harrisburg,
 this second day of August 1906

George D. Brown
 Secretary of Internal Affairs.